

## Injury attendances to Salford Royal Emergency Department

### October 2011 to September 2012

This report summarises recorded injury attendances to Salford Royal Emergency Department (ED) between October 2011 and September 2012.

Between October 2011 and September 2012 there were 26,288 injury attendances to Salford Royal ED. Males accounted for over half (54%) of all injury attendances. The month with the highest injury attendances was May (n=2,524) with December having the lowest attendances (n=1,910) (**Figure 1**). The majority (53%) of attendances were recorded as other injury. Of the specified injury groups falls (24%) accounted for the highest proportion followed by assault (6%), sports injury (5%) and road traffic collision (RTC) (5%) (**Table 1**).

For all injuries the highest proportion of attendances were for persons aged 20-34 (26%) and 5-19 years (23%) (**Figure 2**). Almost four in ten (39%) fall attendees were aged 65 or over. Nearly half (46%) of assault attendees were aged 20-34. Four in ten (41%) of RTC attendees were aged 20-34 (**Figure 3**).

**Table 2** shows the ethnicity of injury attendees to Salford Royal ED. The large majority (92%) were white.

The disposal of a patient can give an indication of the severity of the injuries sustained. Almost half (49%) of attendees were discharged, over three in ten (31%) were referred and 16% were admitted (**Table**

**3**). Almost three in ten (28%) of RTC attendees were referred while over a half (52%) of deliberate self-harm (DSH) attendees were admitted (**Table 4**).

**Table 5** shows the arrival methods of attendances at Salford Royal ED. Over a fifth (21%) of attendees arrived by ambulance.

**Table 6** shows the incident location of injury attendances to Salford Royal ED. Almost six in ten (59%) of injury attendances were recorded as other, while 21% occurred at home and 15% in a public place. Half (50%) of burns injuries occurred at home.

**Table 7** presents data for assault attendees to Salford Royal ED. The majority of attendees were male (69%) and almost a third (32%) arrived by ambulance. Over three in ten (31%) assaults occurred in a public place.

Figure 1: Salford Royal ED: Total injury attendances by gender and month, October 2011 to September 2012

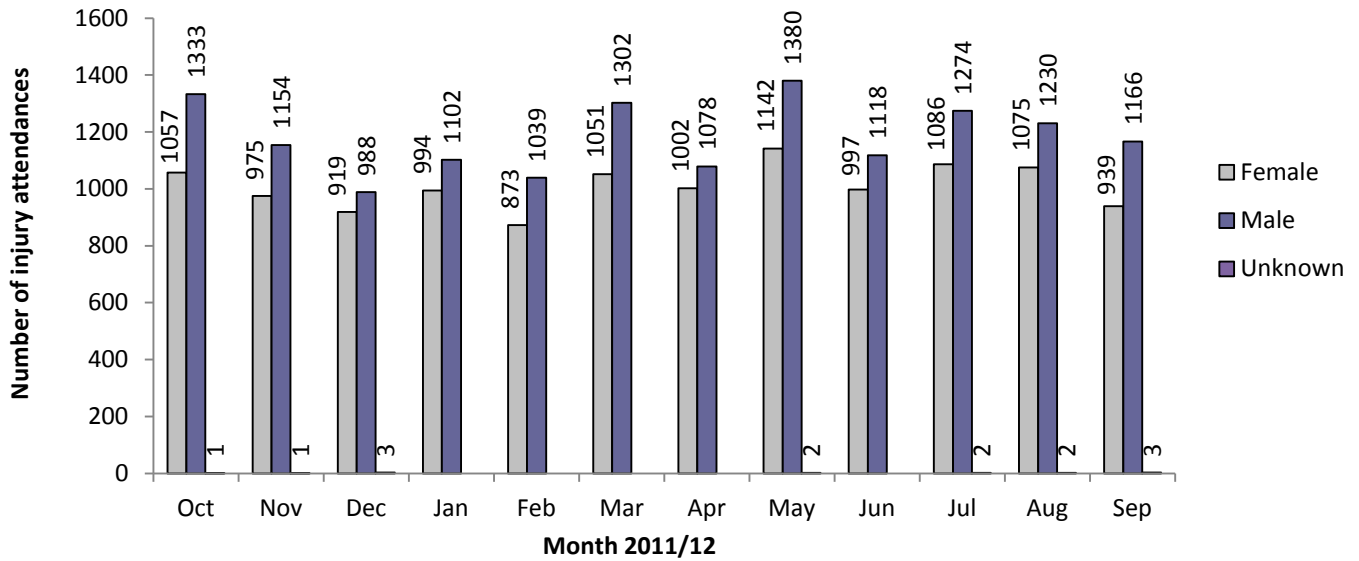
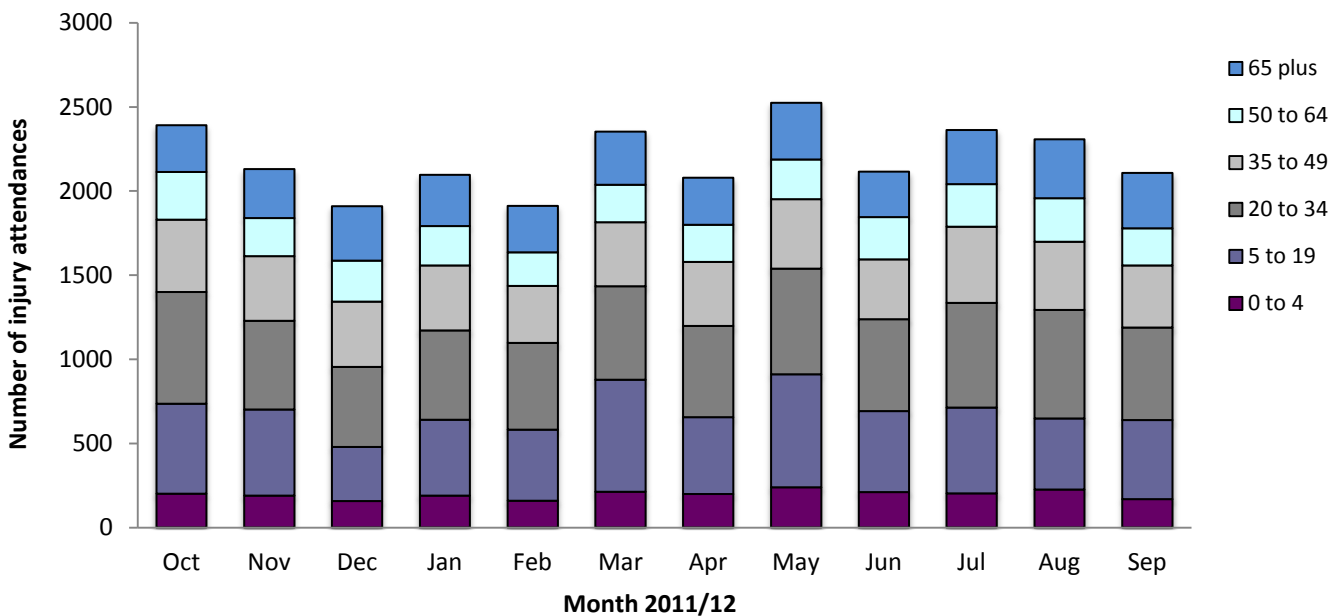


Table 1: Salford Royal ED: Total injury attendances by injury group and month, October 2011 to September 2012<sup>1\*</sup>

Injury group	Oct	Nov	Dec	Jan	Feb	Mar	Apr	May	Jun	Jul	Aug	Sep	Total	%
Other injury	1295	1090	903	1009	987	1321	1135	1323	1156	1340	1209	1161	13929	53
Fall	520	542	589	588	500	603	480	583	466	514	496	454	6335	24
Assault	163	169	120	127	134	141	132	169	110	123	152	119	1659	6
RTC	109	93	120	132	90	82	115	119	108	83	91	110	1252	5
Sports injury	154	116	48	86	70	104	80	165	101	83	86	105	1198	5
DSH	75	66	88	87	76	48	79	72	86	94	88	78	937	4
Bites and stings	32	22	16	31	24	24	24	48	49	85	145	44	544	2
Burns and scalds	43	32	26	36	31	30	35	45	39	40	40	37	434	2
<b>Total</b>	<b>2391</b>	<b>2130</b>	<b>1910</b>	<b>2096</b>	<b>1912</b>	<b>2353</b>	<b>2080</b>	<b>2524</b>	<b>2115</b>	<b>2362</b>	<b>2307</b>	<b>2108</b>	<b>26288</b>	<b>100</b>

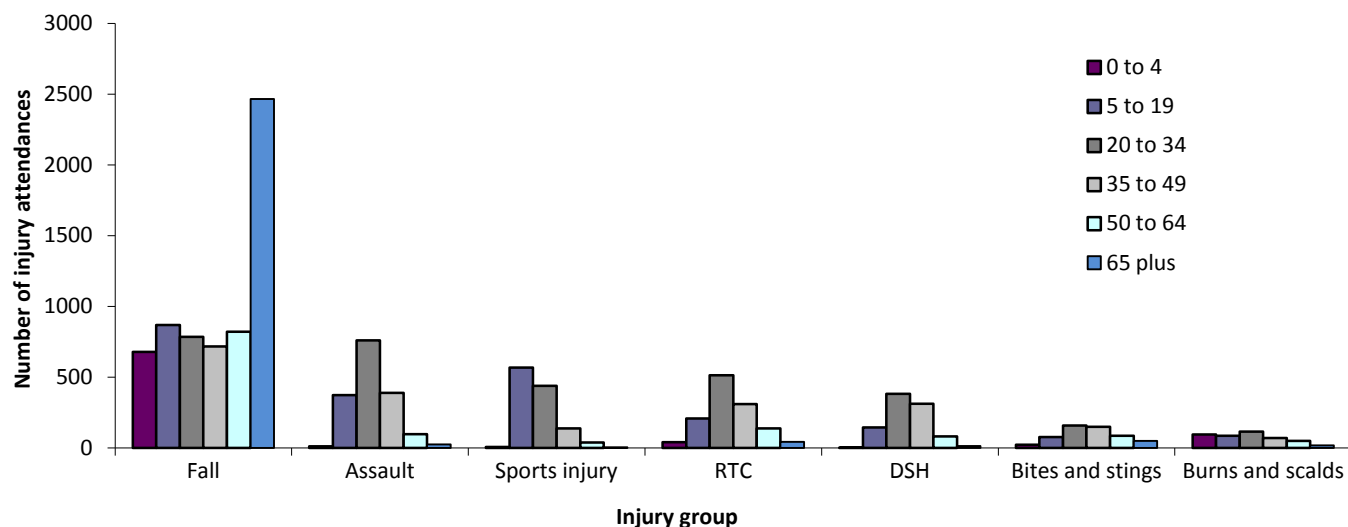
\*Percentages may not add up to 100 due to rounding.

Figure 2: Salford Royal ED: Total injury attendances by age group and month, October 2011 to September 2012



<sup>1</sup> Firework injury has been included in other injury due to low numbers (n=10).

**Figure 3: Salford Royal ED: Total injury attendances by age group and injury group (excluding other injury), October 2011 to September 2012**



**Table 2: Salford Royal ED: Total injury attendances by ethnicity and month, October 2011 to September 2012<sup>2\*</sup>**

Ethnicity	Oct	Nov	Dec	Jan	Feb	Mar	Apr	May	Jun	Jul	Aug	Sep	Total	%
White	2193	1974	1759	1963	1755	2176	1919	2333	1940	2179	2118	1958	24267	92
Any other ethnic group	57	39	32	32	40	46	50	38	41	47	52	35	509	2
Not stated	48	40	28	25	30	42	28	31	30	46	32	20	400	2
Black	27	37	28	26	27	24	25	34	31	34	37	34	364	1
Mixed	25	10	21	11	25	31	14	33	24	19	28	20	261	1
Any other Asian background	8	12	7	14	13	9	13	15	10	8	16	11	136	1
Pakistani	13	***	***	9	7	8	11	16	12	12	12	12	120	0
Indian	10	6	13	6	7	13	10	11	14	8	7	8	113	0
Chinese	<9	7	15	<10	8	***	<9	8	8	<7	***	<7	87	0
Bangladeshi	***	***	***	***	0	***	***	5	5	***	***	***	31	0
<b>Total</b>	<b>2391</b>	<b>2130</b>	<b>1910</b>	<b>2096</b>	<b>1912</b>	<b>2353</b>	<b>2080</b>	<b>2524</b>	<b>2115</b>	<b>2362</b>	<b>2307</b>	<b>2108</b>	<b>26288</b>	<b>100</b>

\*Percentages may not add to 100 due to rounding.

**Table 3: Salford Royal ED: Total injury attendances by method of disposal and month, October 2011 to September 2012**

Disposal	Oct	Nov	Dec	Jan	Feb	Mar	Apr	May	Jun	Jul	Aug	Sep	Total	%
Discharged	1141	1006	933	1012	946	1195	1013	1281	1079	1156	1126	1103	12991	49
Referral/follow-up	812	679	549	648	576	755	699	791	640	782	718	607	8256	31
Admitted	334	363	368	373	317	327	306	359	315	350	380	348	4140	16
Other	104	82	60	63	73	76	62	93	81	74	83	50	901	3
<b>Total</b>	<b>2391</b>	<b>2130</b>	<b>1910</b>	<b>2096</b>	<b>1912</b>	<b>2353</b>	<b>2080</b>	<b>2524</b>	<b>2115</b>	<b>2362</b>	<b>2307</b>	<b>2108</b>	<b>26288</b>	<b>100</b>

**Table 4: Salford Royal ED: Total injury attendances by method of disposal and injury group (excluding other injury), October 2011 to September 2012<sup>2\*</sup>**

Disposal	Assault		Bites and stings		Burns and scalds		DSH		Fall		RTC		Sports injury		Total	
	n	%	n	%	n	%	n	%	n	%	n	%	n	%	n	%
Discharged	786	47	222	41	165	38	181	19	2524	40	750	60	613	51	5241	42
Referral/follow-up	496	30	235	43	216	50	193	21	1787	28	350	28	536	45	3813	31
Admitted	245	15	59	11	42	10	483	52	1858	29	113	9	39	3	2839	23
Other	132	8	28	5	11	3	80	9	166	3	39	3	10	1	466	4
<b>Total</b>	<b>1659</b>	<b>100</b>	<b>544</b>	<b>100</b>	<b>434</b>	<b>100</b>	<b>937</b>	<b>100</b>	<b>6335</b>	<b>100</b>	<b>1252</b>	<b>100</b>	<b>1198</b>	<b>100</b>	<b>12359</b>	<b>100</b>

\*Percentages may not add to 100 due to rounding.

<sup>2</sup> Please note that all numbers less than five have been suppressed in line with patient confidentiality and if there is only one number <5 in a category then two numbers will be suppressed at the next level.

**Table 5: Salford Royal ED: Total injury attendances by arrival mode and month, October 2011 to September 2012**

Arrival mode	Oct	Nov	Dec	Jan	Feb	Mar	Apr	May	Jun	Jul	Aug	Sep	Total	%
Other	1888	1666	1365	1620	1482	1909	1635	2032	1702	1909	1837	1687	20732	79
Ambulance	503	464	545	476	430	444	445	492	413	453	470	421	5556	21
<b>Total</b>	<b>2391</b>	<b>2130</b>	<b>1910</b>	<b>2096</b>	<b>1912</b>	<b>2353</b>	<b>2080</b>	<b>2524</b>	<b>2115</b>	<b>2362</b>	<b>2307</b>	<b>2108</b>	<b>26288</b>	<b>100</b>

**Table 6: Salford Royal ED: Total injury attendances by location of incident and injury group (excluding other injury), October 2011 to September 2012\***

Location	Assault		Bites and stings		Burns and scalds		DSH		Fall		RTC		Sports injury		Total	
	n	%	n	%	n	%	n	%	n	%	n	%	n	%	n	%
Other	915	55	504	93	142	33	910	97	2674	42	1216	97	959	80	7320	59
Home	122	7	21	4	218	50	16	2	2138	34	0	0	27	2	2542	21
Public place	516	31	14	3	<7	1	<8	1	1169	18	31	2	87	7	1830	15
Work	70	4	***	1	65	15	***	0	120	2	***	0	6	1	269	2
Educational establishment	36	2	***	0	***	1	***	0	234	4	***	0	119	10	398	3
<b>Total</b>	<b>1659</b>	<b>100</b>	<b>544</b>	<b>100</b>	<b>434</b>	<b>100</b>	<b>937</b>	<b>100</b>	<b>6335</b>	<b>100</b>	<b>1252</b>	<b>100</b>	<b>1198</b>	<b>100</b>	<b>12359</b>	<b>100</b>

\*Percentages may not add to 100 due to rounding.

**Table 7: Salford Royal ED: Total assault attendances by gender, arrival mode, location of incident, age group and day/time of attendance, October 2011 to September 2012\***

	Assault attendees (n=1,659)		All injury attendees (n=26,288)
	N	%	%
<b>Gender</b>			
Male	1139	69	54
Female	520	31	46
<b>Arrival mode</b>			
Ambulance	533	32	21
Other	1126	68	79
<b>Location</b>			
Other	915	55	59
Public place	516	31	15
Home	122	7	21
Work	70	4	2
Educational establishment	36	2	3
<b>Age group</b>			
0 - 4	12	1	9
5 - 19	374	23	23
20 - 34	761	46	26
35 - 49	390	24	18
50 - 64	98	6	11
65 plus	24	1	14

\*Percentages may not add to 100 due to rounding.

Author: Johnathan Rooney, Published: January 2013

For further information please contact: Val Upton, Centre for Public Health, Research Directorate, Liverpool John Moores University, 2<sup>nd</sup> Floor, Henry Cotton Building, 15-21 Webster Street, Liverpool, L3 2ET, Tel: 0151 231 4539 or Email: [j.rooney@ljmu.ac.uk](mailto:j.rooney@ljmu.ac.uk)  
 Website: [www.tiig.info](http://www.tiig.info) (data requests should be made through the website)